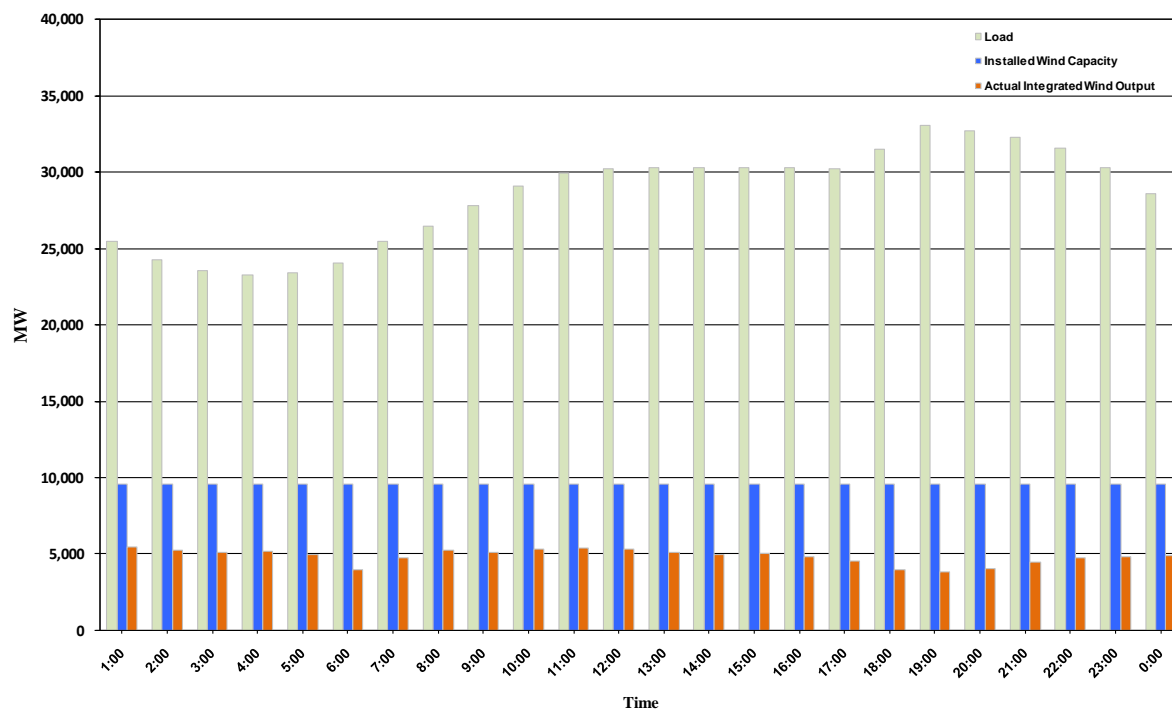




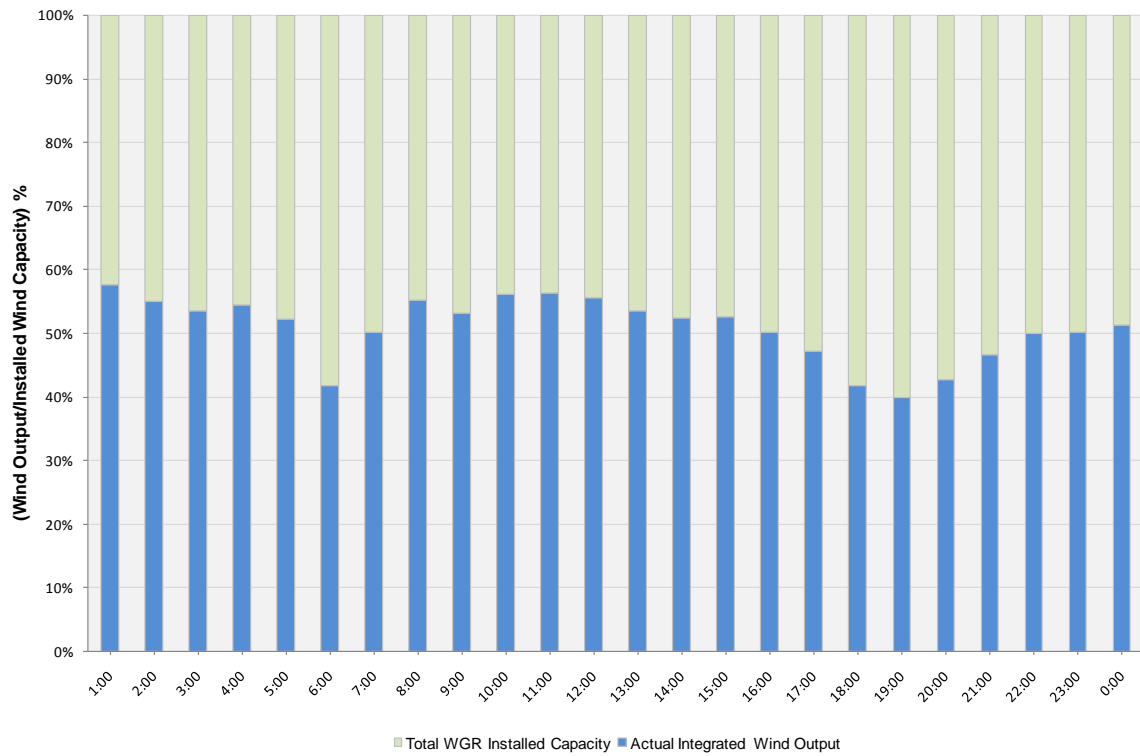
ERCOT Grid Operations Wind Integration Report: 12/04/10

Peak Load	33,085 MW
Load Peak Hour	19
Wind Record 06/12/10	7016 MW
Max Wind value	5715 MW
Wind Peak Hour	00:13:00
Wind Integration %	22.15

Hourly Average Actual Load vs. Actual Wind Output
12-04-2010



Actual Wind Output as a Percentage of the Total Installed Wind Capacity
12-04-2010



Actual Wind Output as a Percentage of the ERCOT Load
12-04-2010

